

riverbed®

Think fast.™

关于: Riverbed

Riverbed Technology 是一家提供高性能 IT 基础建设的公司。Riverbed 的广域网 (WAN) 优化解决方案系列可以提高应用性能、实现整合并实现整个企业的网络和应用的可见性, 借此将企业从通常的 IT 限制解放出来, 同时无需增加带宽、储存器容量或服务器。成千上万有分支运营机构的公司使用 Riverbed 来加速其 IT 架构、降低成本并加快响应。更多关于 Riverbed (NASDAQ: RVBD) 的信息, 请访问 www.riverbed.com。



2005 年、2006 年、2007 年、
2008 年、2009 年



Riverbed Technology
199 Fremont Street
San Francisco, CA 94105
电话: +1 415 247 8800
传真: +1 415 247 8801
www.riverbed.com

Riverbed Technology Ltd.
Farley Hall, London Road
Binfield
Bracknell
Berks RG42 4EU
电话: +44 (0) 1344 401900

Riverbed Technology Pte. Ltd.
391A Orchard Road #22-06/10
Ngee Ann City Tower A
Singapore 238873
电话: +65 6508-7400

Riverbed Technology K.K.
Shiba-Koen Plaza Building 9F
3-6-9, Shiba, Minato-ku
Tokyo, Japan 105-0014
电话: +81 3 5419 1990

©2011 Riverbed Technology。保留所有权利。此图使用的 Riverbed 和任何 Riverbed 产品或服务名称或徽标是 Riverbed Technology 的商标。此图使用的任何其他商标属于其各自所有者。未 Riverbed Technology 或其各自所有者事先书面同意, 不得使用此图所示的商标和徽标。

OVERVIEW

Central Management Console (CMC) from Riverbed® is a turnkey solution for centrally managing Steelhead appliances distributed across a wide area network (WAN).

Using the CMC, administrators can centrally configure, manage, and report on distributed Steelhead appliances, while gaining visibility into the under-lying performance of applications running across a WAN.

With such powerful management and visibility functions, the CMC can reduce the total cost of owner- ship (TCO) of a Riverbed Steelhead deployment even further.

Central Management Console (CMC)

Centralized Configuration, Monitoring, and Control of Steelhead® Appliances from Riverbed

The Central Management Console simplifies the process of deploying, configuring, and managing Steelhead appliances. With just a few clicks, administrators are in full control of their Steelhead appliance deployment. Configuring, updating, and monitoring Steelhead appliances are all done through one Web-based interface.



The CMC also provides visibility into how applications are performing across a WAN. Reporting metrics such as WAN traffic levels, application throughput performance, and TCP session flow characteristics can be displayed over configurable intervals of time going back a full year. Variable reporting modes provide underlying application insight needed to help diagnose problems and maintain the control over your WAN application infrastructure.

FEATURE HIGHLIGHTS

Central Configuration

- Touchless Steelhead configuration
- Flexible group management
- Intuitive configuration profiles
- Scheduled operations
- Central configuration and image libraries
- SSL certificate management

Central Health Monitoring

- Appliance and network health monitoring
- Central log retrieval
- CMC-specific SNMP MIB

Global Performance Reporting

- Aggregated performance reports
- Dynamic report generation
- Customizable pages

Security

- HTTPS access to CMC
- IPSEC encrypted auto-registration exchange
- Steelhead to CMC conversations over SSH
- Radius/TACACS+ authentication
- Monitor (read-only) and Admin (read/write) access
- Secure device registration

Feature Details

Touchless Steelhead configuration – With the CMC, a new Steelhead appliance can be deployed with minimal administration. Steelhead appliances will automatically contact the CMC for configuration and operation information, and start accelerating applications immediately.

Flexible group management – The CMC's powerful grouping feature provides administrators with the flexibility of creating groups of Steelhead appliances based on geographical location, business function, or personal preference. Once groups have been created, an administrator can broadcast a configuration to a specific group, or to multiple groups as desired.

Intuitive configuration profiles – The CMC provides an intuitive "configuration profile" method for managing configurations across an entire Steelhead appliance deployment. Profiles are a set of configuration values that may be created, edited, re-used from existing configurations, and applied to target Steelhead appliances. For example, a complex QoS rule set can be made part of a configuration profile and then applied in one step to a group.

Central configuration and image libraries – The CMC provides the capability to view, archive, restore and install both configuration files and software images to and from distributed Steelhead appliances. Also backup and restore CMC configuration and statistics.

Scheduled operations – The CMC provides a facility to schedule any Steelhead function or configuration. Software updates can be scheduled for after-hours, or optimization policies can be scheduled to take effect at a specific time, auto-detecting the correct platform image.

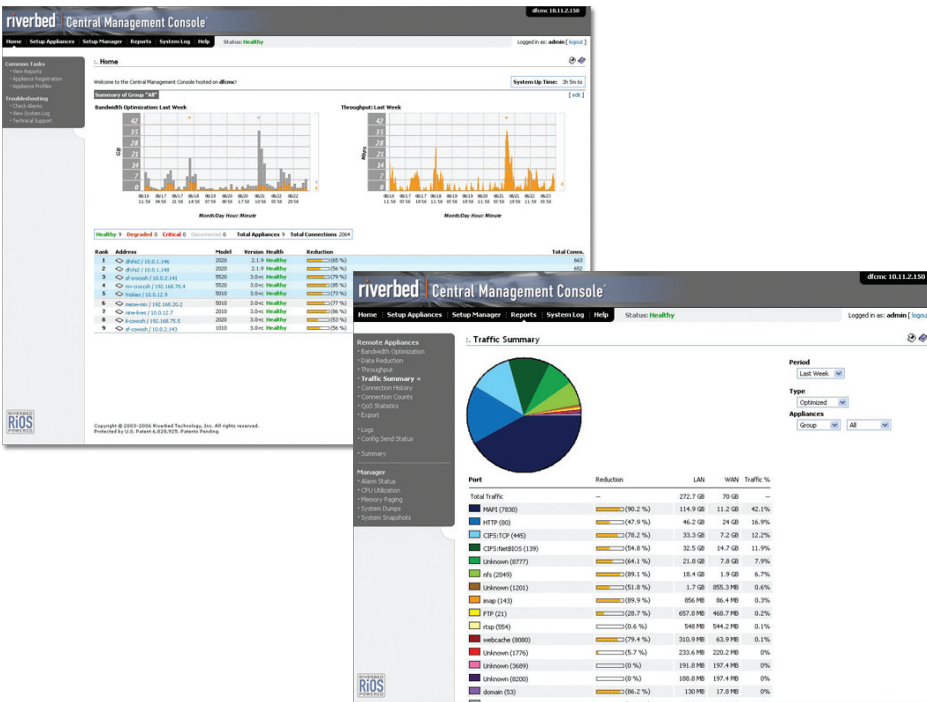
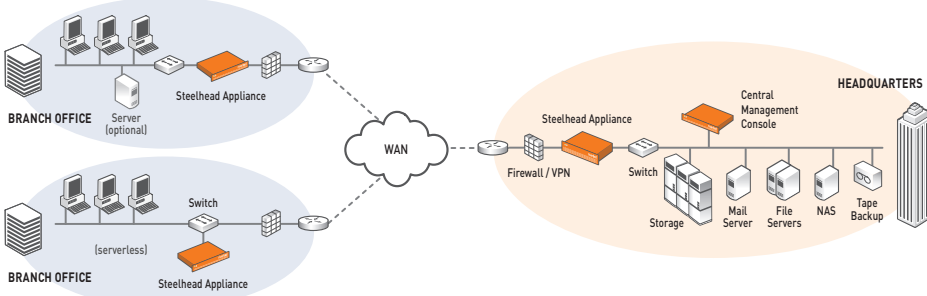
Appliance and network health monitoring – The CMC presents a centralized view of the health and status of a group or all Steelhead appliances. Each Steelhead appliance has its status reported by the CMC as healthy, degraded, or critical based on monitoring a number of health elements. Round-trip times and loss rates on links between Steelhead pairs are collected by the CMC to provide a high-level overview of general network health. Alerts can be sent for changes of health or connection status.

Central log retrieval – The CMC consolidates the viewing and retrieval of one or all Steelhead appliance logs in the network.

SNMP support – The CMC supports SNMP MIBs. IT departments can use SNMP to monitor Steelhead appliances through a 3rd party management system.

Aggregated performance reports – The CMC provides the ability to centrally view per-

典型 Steelhead/CMC 部署



formance statistics for all Steelhead appliances network-wide, or from a specific group of Steelhead appliances. Global statistics also can be represented by QoS classes or applications (optimized and pass-through). View a sortable list of all appliances/groups and their individual performance statistics, or view graphed representations of all appliances or a group's aggregate performance.

Dynamic report generation – With a few clicks of a mouse, select ports/applications/appliances and generate performance reports spanning a configurable window of time up to 12 months in the past. Want to quickly see throughput performance for FTP and HTTP for the first week of last June? Select these two ports and the time interval to see the report almost instantaneously. Customized reports can be emailed regularly to one or more recipients, further simplifying management of large numbers of Steelhead appliances.